

# TURNILS MACHINE DIVISION



This machine, SUD990, may be fitted with additional equipment.

## **SUD 990 & 990R** Blind fabric sewing machine – automatic and easy-to-use for cost-effective production

The 990 and 990R are automatic sewing machines designed for easy and cost-effective handling of roller blind and roman fabrics. Particularly impressive when sewing roller fabrics of up to five meters, these versatile machines also handles roman, both lath tape and lath pocket, plus screen fabrics where it can offer an easier, safer and better quality alternative to welding.

Producing up to 150 seams per hour on blinds up to five metres long, the 990 & 990R are easy to learn and totally de-skills what are normally a very skilled operations. The 990 and 990R are used by a single operator and over a wide range of finishes, they will always assure stitching quality which is consistent and in alignment. The three-speed automatic operation allows for different fabric thicknesses and types, a range of bottom bar pockets are available, while an automatic bobbin winder is included to allow for rapid thread colour changes.

The 990 & 990R come as part of a comprehensive range of proven Turnils machinery, production equipment and support services to help you increase the range, capacity and efficiency of your fabric blind production.

# SUD 990 & 990R



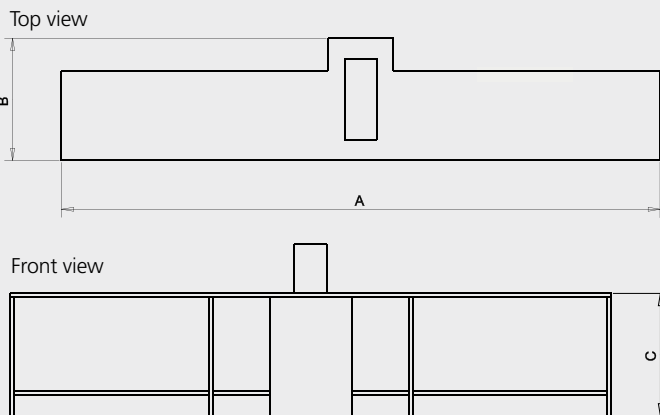
SUD 990



SUD 990R



SUD 990R



Max blind length (mm)	Machine dimensions (mm)		
	A	B	C
990			
3000	7360	850	980
4000	9360	850	980
5000	11360	850	980

Max blind length (mm)	Machine dimensions (mm)		
	A	B	C
990R			
3000	7500	850	980
4000	9500	850	980

## 990 & 990R common features

- Totally de-skilled, easy to operate and maintain
- Sews fabrics up to 3 m in length as standard
- Sews up to 150 seams per hour
- Three-speed operation for different fabric thicknesses
- Suits wide range of fabrics – roller, screen and roman
- Joins screen fabrics easily and safely compared to the alternative of welding
- Double-turn bottom pocket as standard, single-turn optional
- Standard double-turn pocket size of 4 cm requires 5 cm of fabric
- Single needle lockstitch as standard, twin needle variant optional
- Automatic bobbin winder for rapid change of thread colours
- Rear secondary clamp for guiding of the fabric when making joins, adding valances and roman construction.
- Support services i.e. technical support, spare parts, installation and training

## 990R features

- Lath tape attaching tooling, with tape feed unit
- Lath pocket forming tooling
- Machine only comes in two variants, 3 meter and 4 meter

## Additional equipment

- Can be built to accommodate fabric lengths up to 5 m
- Folding unit with customized pocket size
- Folding unit to facilitate attachment of scallops and joins

## Technical data

Current: single phase 230 V (50/60 Hz) 1040 W  
Air pressure: 6 Bar